



**The Clinton-Sampson Chamber of
Commerce has been the voice of business
in the region since 1947.**

CHAMBER OF COMMERCE

WHO WE ARE & WHAT WE DO

The Sampson Chamber is a private non-profit member funded 501c6 organization. We are the respected voice of the business community in the region. We are community minded partners, working together for total community development. We advance the local and regional economy through advocacy to foster a pro-business climate throughout the area, while making lasting and positive impacts for a Greater Sampson. We have a full time staff committed to serving the membership and advancing the mission of our organization, governed by a member elected Board of Directors.



CONSUMERS ARE MORE LIKELY TO BUY FROM CHAMBER MEMBERS

A business study by the Schapiro Group, an Atlanta-based market research firm, reveals a number of important findings about how consumers and business owners perceive the local Chamber of Commerce and the businesses that are members. For example:

- When consumers know that a business is a member of the local chamber, they are 44% more likely to think favorably about it.
- Consumers who are told that a business is a chamber member are 51% more likely to be highly aware of it and 57% more likely to think positively of its local reputation.
- Consumers are 63% more likely to buy goods and services in the future from a company that they believe is a member of the local Chamber of Commerce.

The study also has good news for businesses that sell to other business.

When business decision-makers believe that a business is a chamber member, they are 37% more likely to think favorably of the business, 51% more likely to be highly aware of it, 58% more likely to think positively of its local reputation, and 59% more likely to buy good and service from it.

Supporting the previous findings, the study also reveals positive perception for the local chamber itself:

- Regarding the chamber's impact on the local economy, 82% of residents believe that the local Chamber of Commerce helps create jobs and promotes local economic development.

The results of the Schapiro study are clear: Positive perception increases among consumers and business owners when a business is identified as a member of the local Chamber of Commerce.

BOARD OF DIRECTORS

Executive Committee

Pat Nobles, Chair
Truist Bank

Cynthia Roberts, Vice Chair
Quantifiable Business Processes

Rachel Grantham, Treasurer
Grantham Agronomic Services

Brittany Ackerman
Brittany Weeks Ackerman, DDS

Donna Bullard
Star Communications

Jerry Heinzman
Sampson Regional Medical Center

Jim Matthews
Matthews Health Mart

Craig Richardson
Smithfield Foods

Perry Solice
Performance Ford

CHAMBER STAFF



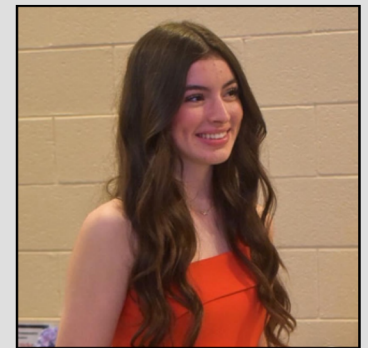
Matt Stone
Executive Director



Alicia Sumner
Marketing/Events



Audrey Rentz
Special Projects



Emily Edgerton
Intern

ANNUAL MEMBERSHIP INVESTMENT TIERS

Diamond **\$Custom**

Platinum **\$8,000**

Gold **\$4,000**

Silver **\$1,500**

INVESTMENT BENCHMARK **\$847**

Bronze **\$750**

Basic/Intro **\$300**



Individual and certain nonprofit memberships also available; contact our office for details

Memberships above the benchmark are included in the elite group of Chamber Champion Investors; call to learn more!

DIAMOND

Support our ability to strengthen
the regional economy as a
visionary partner

FULLY CUSTOMIZABLE

PLEASE CALL TO LEARN MORE



Including (but not limited to) all services and benefits of other tiers, PLUS..

- Part of the Champions Circle of Investors
- Recognition as a Diamond Investor on website, and all publications print and digital
- Invitation to VIP events including exclusive economic development announcements and public policy events
- Gift a membership to any area nonprofit/business (\$750 value)
- Resource guide Ad Sponsorship (\$1,200 value)
- Private invitation to join the Executive Board of Advisors
- Right of first refusal on sponsorships of most popular events/programs throughout the year
- One "Presenting Sponsor" sponsorship (exclusive) of any annual cornerstone event or programming (\$3,000 - \$6,000 value)
- Unlimited complimentary Certificate of Origin processing
- Complimentary tickets (2) for the Executive Leadership Academy (\$3000 value)
- VIP table at the Annual Banquet (\$800 value)
- Complimentary Professional Float or Marching Band Sponsorship in Christmas Parade (\$500-\$1,000 value)

**PLEASE CONTACT OUR EXECUTIVE
DIRECTOR TO LEARN MORE**



PLATINUM

\$8,000/YR

Support our efforts to represent
your business interests in
government



Includes all benefits of Gold, Silver, Bronze & Basic levels, PLUS..

- Part of the Champions Circle of Investors
- Logo recognition in all electronic communications and e-Blasts
- Right of first refusal on marquee event/program sponsorships
- Seat on Chamber's Legislative Affairs Committee & Policy Board
- Gift a membership to non-profit of your choice (\$750 value)
- Private invitation to join the Executive Board of Advisors
- Premium recognition/logo as a Platinum Member on website, Annual Report, and online Membership Directory
- Logo/branding at ALL featured events throughout year (up to 50+)
- Complimentary tickets for Executive Leadership Academy (\$2000 value)
- Discounted float/band sponsorships at Christmas Parade
- Certificate of Origin processing up to 12X annually (\$600 value)
- VIP table at Annual Banquet (\$700 value)

over \$14,000 total value!



GOLD

\$4,000/YR

**Support our ability to take
political action on behalf
of your business**



over \$9,500 value!

Gold level membership and above puts your business among an elite group helping the Chamber invest more into our community

Includes all benefit/services of Silver, Bronze & Basic membership levels, PLUS...

- Part of the Champions Circle of Investors
- Recognition as a Gold level investor on website, in our Annual report, and online Membership directory
- Job Postings through our website and social media platforms
- Certificate of Origin processing up to 6X annually (\$300 value)
- Invitation to VIP events including exclusive economic development announcements and public policy events
- Right of first refusal on sponsorships of key annual programs/events
- Complimentary registration for the Adult Executive Leadership Program (\$1,600 value)
- Complimentary VIP tickets (2) to Annual Banquet (\$200+ value)



SILVER

\$1,500/YR

Promoting your business
growth and our region
as a destination



over \$5,000 value!

Includes all benefit/services of Bronze & Basic membership levels, PLUS:

- Part of the Champions Circle
- Exclusive Insurance Discounts, Workers' Compensation Plans
- Complimentary bulk mailing labels; ONE annually (\$250 value)
- Opportunity to participate in Executive Leadership Academy
- Electronic Membership Directory including e-mail addresses
- Enhanced web presence in our online business directory at www.clintonsampsonchamber.org (\$500 value) including color logo, mapped location, photos and boosted SEO ratings
- Three complimentary promotions/advertisements in our monthly newsletter (\$750 value)
- Invitation to participate on the Public Policy Committee and provide input for the annual legislative agenda

Bronze

\$750/yr

Providing new opportunities
through connection and
relationships



Includes all Basic level benefits, PLUS..

over \$3,000 value!

- Ability to host After Hours & Networking Events
- Marketing Materials may be included in Welcome Packets
- Eligible for member of week/month recognition
- Complimentary job postings on Chamber's Website
- Discounted access to Conference/Board Room/Meeting space
- Enhanced web presence including logo and photos
- Electronic membership directory of Chamber contacts (email addresses included at Silver level and higher)
- Invitation to participate on committees, councils and ambassador team
- Opportunity to sponsor *certain* Chamber events
- Access to area demographic data; GIS services; Business resource information and tailored services
- Participation in member briefing/new member orientation
- Second Category for online directory listings
- Additional Eblast w/ content of your choosing
- Access to Exclusive member-only programs and events

Basic

\$300/yr

Introduce your business to
more people in the
community




- Invitation to all Chamber Events
- Membership decal & digital decal
- Listing in the online directory
- Sponsorship & advertising opportunities
- New member orientation
- New member recognition at quarterly Chamber Events
- Enrollment in our Exclusive Referral Program
- Opportunity to join the Ambassador Club and volunteer on various other Standing Committees
- Ribbon cutting/ground breaking celebrations (includes photos, press release online and print media outlets)
- Marketing collateral in Chamber office
- Discounted registration to Chamber events/programs
- Business to business discounts & access to Affinity programs
- ONE business spotlight annually via EBlast*
- Notary Services
- Copy/Print/Fax Services
- Bulk mail services
- Access to Conference/Board Room/Meeting spaces
- Eligible for Annual Banquet Small Business Awards

over \$1200 value!

*upon request





**ADVOCACY
ADVANCEMENT
NETWORKING
INFORMATION
EDUCATION**

75 YEARS ANNIVERSARY
Est. 1947

C CLINTON **C** SAMPSON
CHAMBER *of* COMMERCE

414 WARSAW ROAD
P.O. BOX 467
CLINTON, NC 28328

PH: 910.592.6177
FX: 910.592.5770

INFO@CLINTONSAMPSONCHAMBER.ORG
WWW.CLINTONSAMPSONCHAMBER.ORG